

振动打桩机 VIBRATORY PILE DRIVER

MAXIMUM
24m
PILING LENGTH

最大打桩长度

JUST 1 MINUTE
8m
桩

只需1分钟

光伏桩/钢板桩/钢管桩/方桩.....

无锡市北奕挖掘机配件制造厂
Wuxi BeiYi Excavator Parts Factory

旋转马达 Rotary Motor

采用液压马达驱动,启动扭矩大,转速快、效率高,可以满足多种高强度作业需求。

Driven by a hydraulic motor, it has large starting torque, fast speed and high efficiency, which can meet the needs of various high-intensity operations.

副臂 Vice Arm

采用高强度合金钢材质,硬度大,抗冲击力强,大幅提高工作负荷力。按作业场景需求定制,增加工作效率。

Made of high-strength alloy steel, it has high hardness and strong impact resistance, which greatly improves the working load. Customized according to the needs of the job scene to increase work efficiency.

驱动转盘 Drive the turntable

采用硬质合金材料制作,高效耐磨,稳定性好,具有较大的承载力,能够承受打桩时的高扭矩力和冲击力。

Made of hard alloy material, it has high efficiency, wear resistance, good stability, large bearing capacity, and can withstand high torque and impact during piling.

振动马达 Hydraulic Vibration Motor

进口液压马达。采用斜轴式定量柱塞马达,低速大扭矩、效率高、噪音低、排量可控、易于维护、适用性广。

Imported hydraulic motor. It adopts inclined shaft quantitative plunger motor, low speed and high torque, high efficiency, low noise, controllable displacement, easy maintenance and wide applicability.

夹具 Fixture

采用液压原理设计,定制保压阀夹持力稳定、操作便捷,夹嘴可按定制,满足不同场景作业。

Designed with hydraulic principle, the custom-made pressure maintaining valve has stable clamping force and convenient operation. The clamping nozzle can be customized to meet different scenarios.

减震块 Shock Absorber

采用高性能橡胶减震块,可以有效降低打桩机施工过程中的振动和噪音,同时拆卸便捷,易于保养。

The use of high-performance rubber damping blocks can effectively reduce the vibration and noise during the construction of the pile driver, and at the same time, it is easy to disassemble and maintain.

翻转轴 Flip Axis

采用可拆卸式设计,不仅可以方便地进行维护和保养,还可以提高设备的通用性和灵活性。

The detachable design not only facilitates maintenance and maintenance, but also improves the versatility and flexibility of the equipment.

齿轮箱 Gearbox

独特通气口设计,提高系统效率、改善润滑性能并改善冷却效果,有利于打桩机的工作效率和施工质量。

The unique air vent design improves the system efficiency, improves the lubrication performance and improves the cooling effect, which is beneficial to the working efficiency and construction quality of the pile driver.



打桩机参数 PILE DRIVER PARAMETERS

型号 Model	单位 Unit	BY-VH450
偏心力矩 Eccentric moment	Nm	85
振频 Vibration frequency	Rpm	2800
激振力 Exciting force	Ton	75
马达排量 Motor displacement	ml/r	125
主机重量 Host weight	Kg	3300
副臂型号 jib model		VH450
回转 turn around	degrees	180
外形尺寸(长*宽*高) Overall dimensions (length*width*height)	MM	3100*1550*3400
液压系统操作压力 Hydraulic system operating pressure	Bar	280-330
液压系统流量需求 Hydraulic system flow requirements	Lpm	255-280
适合挖掘机重量 Suitable for excavator weight	Ton	36-50
标准臂可打高度 Standard arm reachable height	M	8-9
最长可打桩长度 Maximum piling length	M	18

关联配件 ACCESSORIES



液压振动马达
Vibration Motor



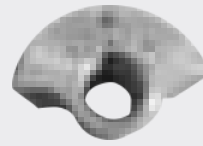
旋转马达
Rotary Motor



旋转盘齿轮
Rotating Disc Gear



进口轴承
Imported Bearings



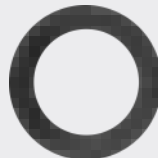
甩块
Throw Block



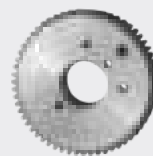
夹具齿板
Fixture Tooth Plate



管路 pipeline



密封件
Seals



甩块齿轮
Block Gear



保压阀
Pressure Relief Valve



夹具油缸
Fixture Cylinder



甩块轴
Shaft



减震块
Shock Absorber



电控阀块
Electric Control Valve Block

专业定制配套打桩臂 PILING ARM



整机+打桩臂+打桩机配套



COMPLETE MACHINE +
PILE ARM +PILE+DRIVER
+KIT



操作原理
OPERATING PRINCIPLE

打桩加长臂是为了拓展挖掘机打桩范围而特殊设计制造的一组挖掘机前端工作装置。打桩加长臂采用Q345B钢材制作，具有较好的强度及刚性轴套采用45#+20#钢来制作，内镶40Cr衬套。

The piling extension arm is a set of excavator front-end working devices specially designed and manufactured to expand the piling range of the excavator. The piling extension arm is made of Q345B steel, which has good strength and rigidity. The shaft sleeve is made of 45#+20# steel, and 40Cr village sleeve is inlaid inside.

打桩臂参数 PILING ARM PARAMETERS

型号 Models	单位 Unit	20T	30T	35T	40T	45T
打桩臂总长 Total length	mm	13000	14000	15000	16000	18000
产品重量 Weight	kg	3500	4000	4500	5000	5500
打桩高度 Height	mm	11000	12000	13000	14000	16000
运输全高 Total height of loading	mm	2950	3210	3210	3420	3420

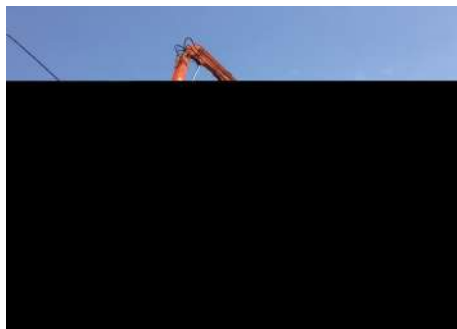
钢板桩

(地基 / 道路 / 桥梁 / 河道等)



STEEL SHEET PILE

(FOUNDATION / ROAD / BRIDGE)
RIVER COURSE



钢管桩



钢管桩



筒桩



筒桩



圆形桩



筒桩

光伏桩

(沙漠/丘陵/平原/水上等)

PHOTOVOLTAIC PILE

(DESERTS / HILLS / PLAINS / WATER)



山地光伏



平原光伏



雪地光伏



平原光伏



沙漠光伏



水上光伏



方形桩



桥梁打桩



预制桩



预制桩



方形桩



木桩



水上打桩



为 | 效 | 率 | 而 | 生
BORN FOR EFFICIENCY

无锡市北奕挖掘机配件制造厂

Wuxi BeiYi Excavator Parts Factory

中国地区: **0510-85167600** 国际市场: **+86 0510-85450099**

www.wxbeiye.com / www.wxbychina.com | 

Email: wxby997@163.com

无锡市惠山区洛社镇双庙工业园A区
Shuang miao Industry Park A, Luoshe Town, Huishan District, Wuxi

