

# 振动打桩机 VIBRATORY PILE DRIVER

MAXIMUM  
**24m**  
PILING LENGTH

最大打桩长度

JUST 1 MINUTE  
**8m**  
桩

只需1分钟

光伏桩/钢板桩/钢管桩/方桩.....

无锡市北奕挖掘机配件制造厂  
Wuxi BeiYi Excavator Parts Factory

**旋转马达 Rotary Motor**

采用液压马达驱动,启动扭矩大,转速快、效率高,可以满足多种高强度作业需求。

Driven by a hydraulic motor, it has large starting torque, fast speed and high efficiency, which can meet the needs of various high-intensity operations.

**副臂 Vice Arm**

采用高强度合金钢材质,硬度大,抗冲击力强,大幅提高工作负荷力。按作业场景需求定制,增加工作效率。

Made of high-strength alloy steel, it has high hardness and strong impact resistance, which greatly improves the working load. Customized according to the needs of the job scene to increase work efficiency.

**驱动转盘 Drive the turntable**

采用硬质合金材料制作,高效耐磨,稳定性好,具有较大的承载力,能够承受打桩时的高扭矩力和冲击力。

Made of hard alloy material, it has high efficiency, wear resistance, good stability, large bearing capacity, and can withstand high torque and impact during piling.

**振动马达 Hydraulic Vibration Motor**

进口液压马达。采用斜轴式定量柱塞马达,低速大扭矩、效率高、噪音低、排量可控、易于维护、适用性广。

Imported hydraulic motor. It adopts inclined shaft quantitative plunger motor, low speed and high torque, high efficiency, low noise, controllable displacement, easy maintenance and wide applicability.

**夹具 Fixture**

采用液压原理设计,定制保压阀夹持力稳定、操作便捷,夹嘴可按定制,满足不同场景作业。

Designed with hydraulic principle, the custom-made pressure maintaining valve has stable clamping force and convenient operation. The clamping nozzle can be customized to meet different scenarios.

**减震块 Shock Absorber**

采用高性能橡胶减震块,可以有效降低打桩机施工过程中的振动和噪音,同时拆卸便捷,易于保养。

The use of high-performance rubber damping blocks can effectively reduce the vibration and noise during the construction of the pile driver, and at the same time, it is easy to disassemble and maintain.

**翻转轴 Flip Axis**

采用可拆卸式设计,不仅可以方便地进行维护和保养,还可以提高设备的通用性和灵活性。

The detachable design not only facilitates maintenance and maintenance, but also improves the versatility and flexibility of the equipment.

**齿轮箱 Gearbox**

独特通气口设计,提高系统效率、改善润滑性能并改善冷却效果,有利于打桩机的工作效率和施工质量。

The unique air vent design improves the system efficiency, improves the lubrication performance and improves the cooling effect, which is beneficial to the working efficiency and construction quality of the pile driver.



# 打桩机参数 PILE DRIVER PARAMETERS

型号 Model	单位 Unit	BY-VH150	BY-VH250	BY-VH330	BY-VH400	BY-VH450
偏心力矩 Eccentric moment	Nm	22	40	50	65	85
振频 Frequency	Rpm	2500	2800	2800	2800	2800
激振力 Excitation Force	Ton	24	36	45	58	75
主机重量 Weight of main body	Kg	1300	2800	3000	3300	3300
液压系统操作压力 Operating Pressure of oil system	Bar	220-320	280-330	280-330	280-330	280-330
液压系统流量需求 Flow Demand for Hydraulic oil system	Lpm	110-160	150-240	168-250	210-260	255-280
适合挖掘机重量 Excavator	Ton	12-18	18-23	24-30	31-35	36-50
标准臂可打高度 Piling Height of standard arm	M	5	6	6-7	7-8	8-9
最长可打桩长度 Max pile length	M	—	9	13	16	18

## 关联配件 ACCESSORIES



液压振动马达  
Vibration Motor



旋转马达  
Rotary Motor



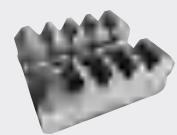
旋转盘齿轮  
Rotating Disc Gear



进口轴承  
Imported Bearings



甩块  
Throw Block



夹具齿板  
Fixture Tooth Plate



管路 pipeline



密封件  
Seals



甩块齿轮  
Block Gear



保压阀  
Pressure Relief Valve



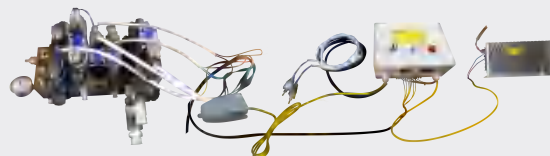
夹具油缸  
Fixture Cylinder



甩块轴  
Shaft



减震块  
Shock Absorber



电控阀块  
Electric Control Valve Block

### 旋转倾斜 Rototilt

智能旋转倾斜装置具有倾斜功能,可轻松拾取设置桩.

Smart Rot tilt with tilt function, easy for picking up setting the piles.

### 副臂 Vice Arm

采用高强度合金钢材质,硬度大,抗冲击力强,大幅提高工作负荷力。按作业场景需求定制,增加工作效率。

Made of high-strength alloy steel, it has high hardness and strong impact resistance, which greatly improves the working load. Customized according to the needs of the job scene to increase work efficiency.

### 弹性体 Elastomer

进口定制,保证使用寿命.

Imported customized ensures its service life.

### 齿轮箱 Gear box

高精度变速箱确保;  
新型散热专利;  
长期稳定运行.

High precision gearbox ensures;  
New heat dissipation patent;  
long term and stable operation.

### 侧握 Side grip

根据不同的工作条件,可轻松更换钳口.

Easy changeable jaws depends on the working condition.

### 主夹嘴 Main Clamp

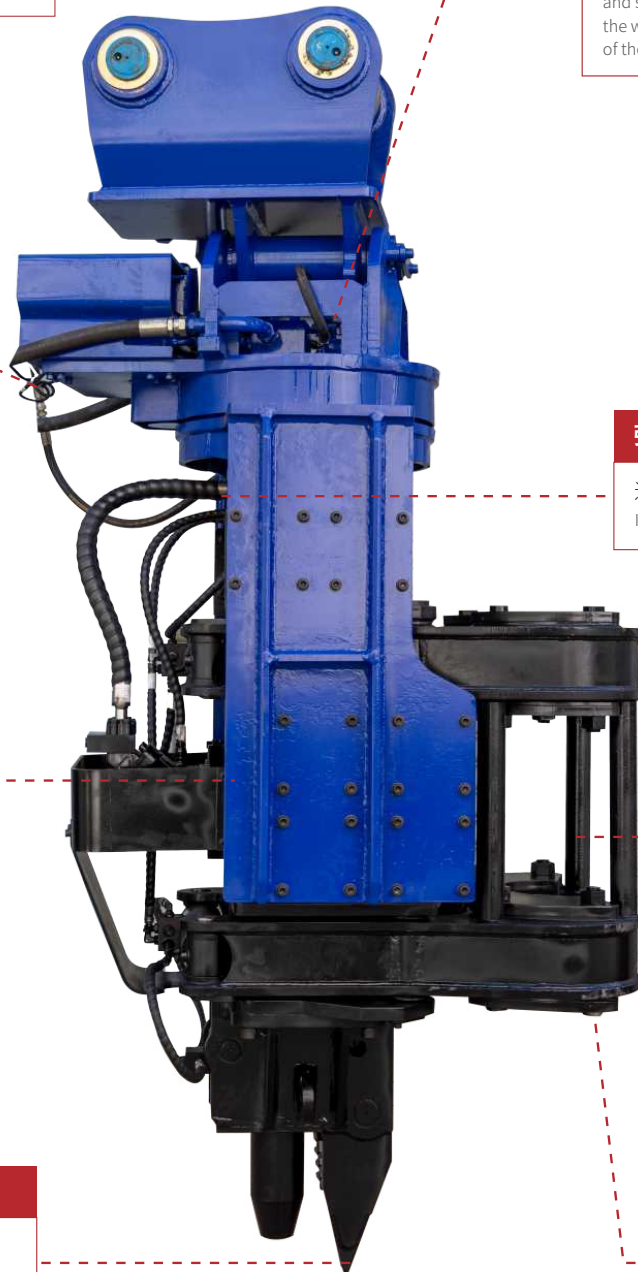
一体式活塞夹紧嘴油缸;  
动力强劲、保压稳定可靠.

Integrated piston clamping nozzle oil cylinder;  
powerful, pressure maintaining, stable and reliable.

### 侧夹嘴 Jaws

进口耐磨板;CNC一次性成型;  
优质材料;坚固耐磨

imported wear-resistant plate;CNC one-time molding;



# 侧夹式打桩机参数 PARAMETERS

型号 Model	单位 Unit	BY-SG250	BY-SG330
振动频率 Vibration Frequency	rpm	2800	2800
偏心力矩 Eccentricity Moment Torque	nm	40	50
激振力 Exciting Force	T	36	45
机器主重 Main Machine Weight	kg	2600	3100
液压系统工作压力 Operating Pressure Of Hydraulic System	bar	280	320
液压系统流量需求 Flow Demand Of Hydraulic System	lpm	220	250
适用挖掘机 Suitable Excavator	T	18-25	35-45

## 主要特点 MAIN FEATURE

- |   |   |
|---|---|
| <ul style="list-style-type: none"> <li><b>01</b> 控制灵活、操作简单,全液压控制,360度全回转,左右45度侧倾,夹桩方便,可在敏感地带作业;</li> <li><b>02</b> 无需改装挖机,即装即用;</li> <li><b>03</b> 不受桩长限制,可在限高空间施工;</li> <li><b>04</b> 施工安全,稳定高效,运输更便利经济;</li> <li><b>05</b> 适用钢板桩,型钢,管桩,水泥桩,木桩等多种桩型,一机多用。</li> </ul> | <ul style="list-style-type: none"> <li>1. Flexible control, simple operation, full hydraulic control, 360-degree full rotation, 45-degree side tilt, convenient pile clamping, can operate in sensitive areas;</li> <li>2. No need to modify the excavator, ready to use;</li> <li>3. Not limited by pile length, can be constructed in restricted height space;</li> <li>4. Safe construction, stable and efficient, more convenient and economical transportation;</li> <li>5. Applicable to various pile types such as steel sheet piles, steel, pipe piles, cement piles, wooden piles, etc., one machine for multiple uses.</li> </ul> |
|---|---|

## 应用案例 APPLICATIONS



## 专业定制配套打桩臂 PILING ARM



整机+打桩臂+打桩机配套



COMPLETE MACHINE +  
PILE ARM + PILE + DRIVER  
+ KIT



操作原理  
OPERATING PRINCIPLE

打桩加长臂是为了拓展挖掘机打桩范围而特殊设计制造的一组挖掘机前端工作装置。打桩加长臂采用Q345B钢材制作，具有较好的强度及刚性轴套采用45#+20#钢来制作，内镶40Cr衬套。

The piling extension arm is a set of excavator front-end working devices specially designed and manufactured to expand the piling range of the excavator. The piling extension arm is made of Q345B steel, which has good strength and rigidity. The shaft sleeve is made of 45#+20# steel, and 40Cr village sleeve is inlaid inside.

## 打桩臂参数 PILING ARM PARAMETERS

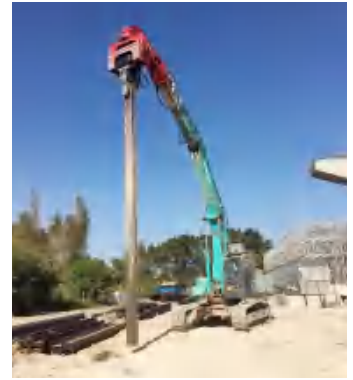
型号 Models	单位 Unit	20T	30T	35T	40T	45T
打桩臂总长 Total length	mm	13000	14000	15000	16000	18000
产品重量 Weight	kg	3500	4000	4500	5000	5500
打桩高度 Height	mm	11000	12000	13000	14000	16000
运输全高 Total height of loading	mm	2950	3210	3210	3420	3420

**钢板桩**

(地基 / 道路 / 桥梁 / 河道等)

**STEEL SHEET PILE**

( FOUNDATION / ROAD / BRIDGE )  
RIVER COURSE



钢管桩



钢管桩



筒桩



筒桩



圆形桩



筒桩

# 光伏桩

(沙漠 / 丘陵 / 平原 / 水上等)

## PHOTOVOLTAIC PILE

(DESERTS / HILLS / PLAINS / WATER)



山地光伏



平原光伏



雪地光伏



平原光伏



沙漠光伏



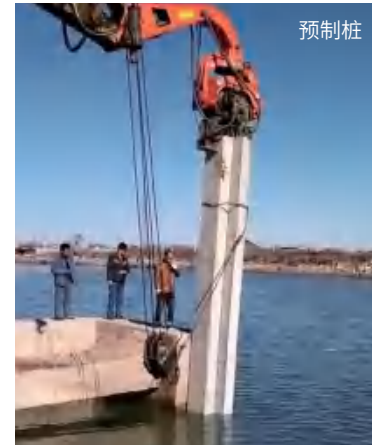
水上光伏



方形桩



桥梁打桩



预制桩



预制桩



方形桩



木桩



水上打桩





为 | 效 | 率 | 而 | 生  
BORN FOR EFFICIENCY

## 无锡市北奕挖掘机配件制造厂 Wuxi BeiYi Excavator Parts Factory

中国地区: **0510-85167600** 国际市场: **+86 0510-85450099**

[www.wxbeiye.com](http://www.wxbeiye.com) / [www.wxbychina.com](http://www.wxbychina.com) | 

Email: [wxby997@163.com](mailto:wxby997@163.com)

无锡市惠山区洛社镇双庙工业园A区  
Shuang miao Industry Park A, Luoshe Town, Huishan District, Wuxi



## 振动打桩机介绍

# INTRO DUCE

液压打桩机是一种利用液压装置将钢筋混凝土桩压入地层的工程机械。利用高频振动将机械产生的垂直振动通过夹具传递给桩体，导致桩周围的土体结构发生变化，强度降低，桩身周围土体液化，减少桩侧与土体的摩擦阻力，然后以挖机下压力、振动沉拔锤与桩身自重将桩沉入土中。在拔桩时，振动打桩机以挖机上提力将桩拔起。

A hydraulic pile driver is a construction machine that uses hydraulic devices to press reinforced concrete piles into the ground. Using high-frequency vibration, the vertical vibration generated by the machine is transmitted to the pile body through the clamp, resulting in changes in the soil structure around the pile, reducing the strength, liquefying the soil around the pile body, reducing the frictional resistance between the pile side and the soil, and then digging. The pile is sunk into the soil by the machine's down pressure, the vibrating sinking hammer and the self-weight of the pile body. When pulling out piles, the vibrating pile driver pulls up the piles with the lifting force of the excavator.

# VIBRATORY PILE DRIVER

### 驱动转盘 Drive the turntable

采用硬质合金材料制作，高效耐磨，稳定性好，具有较大的承载力，能够承受打桩时的高扭矩力和冲击力。  
Made of hard alloy material, it has high efficiency, wear resistance, good stability, large bearing capacity, and can withstand high torque and impact during piling.

### 翻转轴 Flip Axis

采用可拆卸式设计，不仅可以方便地进行维护和保养，还可以提高设备的通用性和灵活性。  
The detachable design not only facilitates maintenance and maintenance, but also improves the versatility and flexibility of the equipment.

### 旋转马达 Rotary Motor

采用液压马达驱动，启动扭矩大，转速快，效率高，可以满足多种高强度作业需求。  
Driven by a hydraulic motor, it has large starting torque, fast speed and high efficiency, which can meet the needs of various high-intensity operations.

### 副臂 Vice Arm

采用高强度合金钢材质，硬度大，抗冲击力强，大幅提高工作负荷力。按作业场景需求定制，增加工作效率。  
Made of high-strength alloy steel, it has high hardness and strong impact resistance, which greatly improves the working load. Customized according to the needs of the job scene to increase work efficiency.

### 夹具 Fixture

采用液压原理设计，定制保压阀夹持力稳定、操作便捷，夹嘴可按定制，满足不同场景作业。  
Designed with hydraulic principle, the custom-made pressure maintaining valve has stable clamping force and convenient operation. The clamping nozzle can be customized to meet different scenarios.

### 减震块 Shock Absorber

采用高性能橡胶减震块，可以有效降低打桩机施工过程中的振动和噪音，同时拆卸便捷，易于保养。  
The use of high-performance rubber damping blocks can effectively reduce the vibration and noise during the construction of the pile driver, and at the same time, it is easy to disassemble and maintain.

### 齿轮箱 Gearbox

独特通气口设计，提高系统效率、改善润滑性能并改善冷却效果，有利于打桩机的工作效率和施工质量。  
The unique air vent design improves the system efficiency, improves the lubrication performance and improves the cooling effect, which is beneficial to the working efficiency and construction quality of the pile driver.

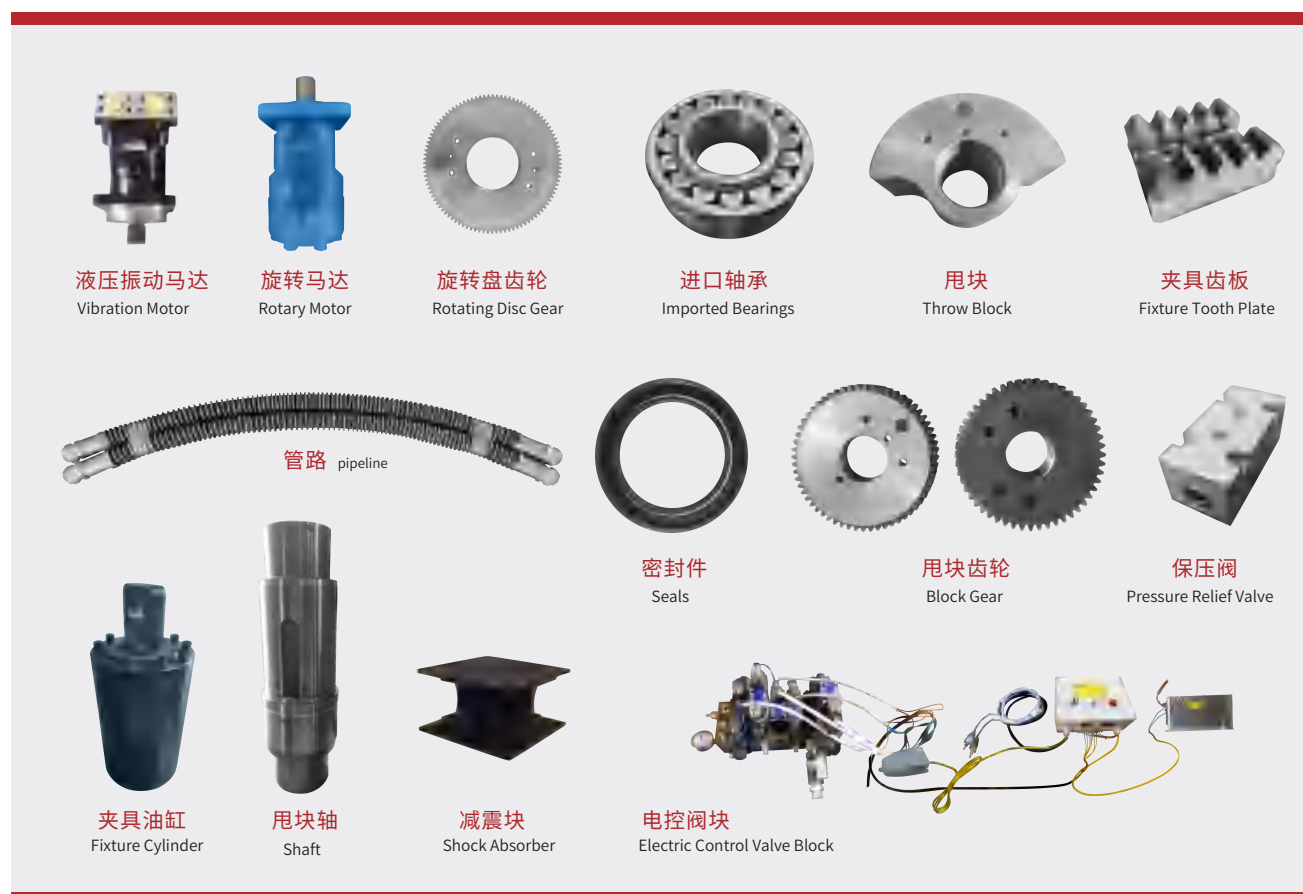
### 振动马达 Hydraulic Vibration Motor

进口液压马达。采用斜轴式定量柱塞马达，低速大扭矩、效率高、噪音低、排量可控、易于维护、适用性广。  
Imported hydraulic motor. It adopts inclined shaft quantitative plunger motor, low speed and high torque, high efficiency, low noise, controllable displacement, easy maintenance and wide applicability.

## 打桩机参数 PILE DRIVER PARAMETERS

型号 Model	单位 Unit	BY-VH150	BY-VH250	BY-VH330	BY-VH350	BY-VH450
偏心力矩 Eccentric moment	Nm	22	40	50	65	85
振频 Frequency	Rpm	2500	2800	2800	2800	2800
激振力 Excitation Force	Ton	15.1	36	45	58	75
主机重量 Weight of main body	Kg	1300	2800	3000	3300	3300
液压系统操作压力 Operating Pressure of oil system	Bar	220-320	280-330	280-330	280-330	280-330
液压系统流量需求 Flow Demand for Hydraulic oil system	Lpm	110-160	150-240	168-250	210-260	255-280
适合挖掘机重量 Excavator	Ton	15-18	18-25	24-30	31-35	36-50
标准臂可打高度 Piling Height of standard am	M	5	6	6-7	7-8	8-9
最长可打桩长度 Max pile length	M	—	9	13	16	18

## 关联配件 ACCESSORIES



## 专业定制配套打桩臂 PILING ARM



## 打桩臂参数 PILING ARM PARAMETERS

型号 Models	单位 Unit	20T	30T	35T	40T	45T
打桩臂总长 Total length	mm	13000	14000	15000	16000	18000
产品重量 Weight	kg	3500	4000	4500	5000	5500
打桩高度 Height	mm	11000	12000	13000	14000	16000
运输全高 Total height of loading	mm	2950	3210	3210	3420	3420

型号 Model	单位 Unit	BY-VH150	BY-VH250	BY-VH330	BY-VH350	BY-VH450
偏心力矩 Eccentric moment	Nm	22	40	50	65	85
振频 Frequency	Rpm	2500	2800	2800	2800	2800
激振力 Excitation Force	Ton	15.1	36	45	58	75
主机重量 Weight of main body	Kg	1300	2800	3000	3300	3300
液压系统操作压力 Operating Pressure of oil system	Bar	220-320	280-330	280-330	280-330	280-330
液压系统流量需求 Flow Demand for Hydraulic oil system	Lpm	110-160	150-240	168-250	210-260	255-280
适合挖掘机重量 Excavator	Ton	15-18	18-25	24-30	31-35	36-50
标准臂可打高度 Piling Height of standard am	M	5	6	6—7	7—8	8—9
最长可打桩长度 Max pile length	M	—	9	13	16	18