

圆形破桩机介绍

INTRO DUCE

圆形破桩机是一种桩头截除机械，通过动力源给多个油缸提供压力，油缸直接驱动钎杆，同时挤压桩身，使桩头截除。它采用高度模块化组合，通过销轴连接模块，可以通过不同模块数量组合，截除一定范围内直径桩头。一般适用于桩径在600mm-2500mm的桩群施工过程中。

The circular pile breaker is a pile head cutting machine, which provides pressure to multiple oil cylinders through the power source, and the oil cylinders directly drive the drill rod, and at the same time squeeze the pile body to cut the pile head. It adopts a highly modular combination, the modules are connected by pin shafts, and the number of different modules can be combined to cut off pile heads within a certain range. It is generally applicable to pile group construction projects with a pile diameter of 600mm-2500mm.

HYDRAULIC PILE BREAKER

主机 the host

采用铬钼耐热钢制成，具有优良的耐高温氧化性能和高温抗腐蚀性，同时具有较好的抗冲击性，能适用于在高温环境下工作。

Made of chrome-molybdenum heat-resistant steel, it has excellent high-temperature oxidation resistance and high-temperature corrosion resistance, and has good impact resistance, and can be suitable for working in high-temperature environments.

油缸 cylinder

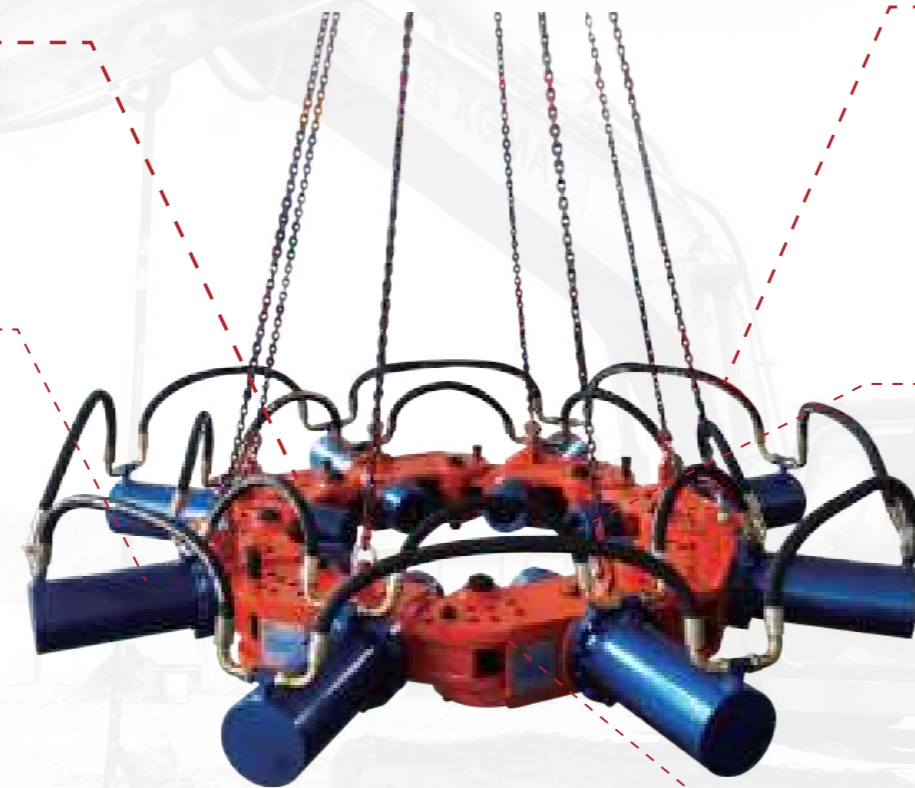
采用无缝钢管制作，油缸芯采用特殊合金钢制成，经过深度淬火处理，具有坚硬、使用寿命长等特点。

It is made of seamless steel pipe, and the cylinder core is made of special alloy steel, which has been hardened and has a long service life after deep quenching treatment.

动力源 power source

可以是挖掘机、液压站等动力设备，通过液压站可实现远程操控。

It can be excavator, hydraulic station and other power equipment, and remote control can be realized through the hydraulic station.



油管 tubing

采用高压油管，具有较高的耐压性和耐磨性，能够承受较大的工作负荷和振动冲击。搭配聚氨酯密封圈，可以长时间保持油管接头的密封性能。

Using high-pressure oil pipes, it has high pressure resistance and wear resistance, and can withstand large working loads and vibration shocks. With polyurethane sealing ring, it can maintain the sealing performance of the oil pipe joint for a long time.

钎杆 chisel

采用42CrMo材质。整条经过调质热处理，高频淬火，表面进行防锈油漆。保证足够的硬度、抗磨损耐腐蚀。

Using 42CrMo material. The whole strip has undergone tempering heat treatment, high-frequency quenching, and anti-rust paint on the surface. Ensure sufficient hardness, wear resistance and corrosion resistance.

模块化组合 modular combination

通过销轴连接模块，可以通过不同模块数量组合，截除一定范围内直径桩头。

The modules are connected by pin shafts, and pile heads with diameters within a certain range can be cut off by combining different modules.



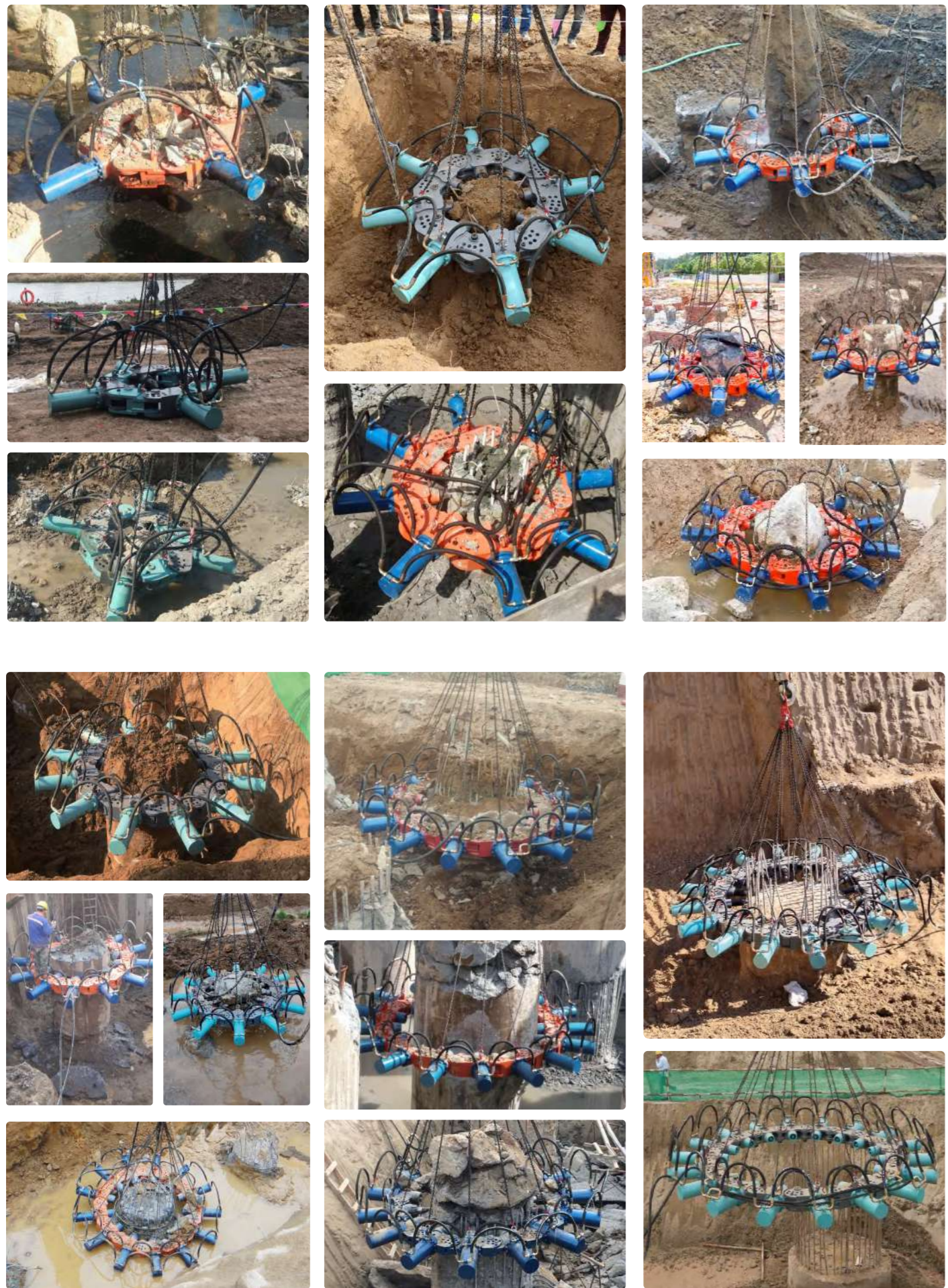
破桩机参数 PARAMETER

模块数量 Module Number	单位 Unit	4	8	9	10	11	12	13	14	15	16	17	18
组合总重量 Combination total weight	KG	1600	2640	2970	3300	3630	3960	4290	4620	4950	5280	5610	5940
破桩直径范围 Pile diameter range	mm	400-600	600-800	800-1000	1000-1150	1150-1300	1300-1500	1500-1650	1650-1800	1800-1970	1970-2200	2200-2360	2360-2500
适用挖机吨位 Hydraulic excavator	T	备注：需另增加连接轴 20T-30T			30T-40T			液压系统/泵站 Hydraulic system/pump station					

钎杆最大加压力 Max.Thrust	300KN	单根油缸最大顶力 Max.Cylinder required	20L/min	配套工程机械吨位 Machinery Tonnage	20t	定位销 Location pin Φ40
液压油缸最大行程 Max.Cylinder Trip	300mm	钎杆直径 Chisel diameter	110mm	单一模块重量 Single module weight	335KG	
液压油缸最大压力 Max.Cylinder Pressure	30MPa	单次破桩高度 Max.Hoist Capacity	≤ 500mm	单一模块尺寸 Single module size	1015*865*340	

关联配件 ACCESSORIES





BEIYI
MACHINERY

BORN
FOR
EFFICIENCY

为 | 效 | 率 | 而 | 生



北奕机械
BEIYI MACHINERY

中国地区:0510-85167600 国际市场:+86 0510-85450099

www.wxbeiye.com / www.wxbychina.com | Q

Email:wxby997@163.com

无锡市惠山区洛社镇双庙工业园A区
Shuang miao Industry Park A,Luoshe Town, Huishan District,Wuxi



北奕机械
BEIYI MACHINERY

为 | 效 | 率 | 而 | 生
BORN FOR EFFICIENCY

圆形破桩机

**HYDRAULIC PILE
BREAKER**

BROKEN PILE DIAMETER
3.3
m

破桩直径最大可达3.3m

BREAK-1 CEMENT PILE
3
min

破1根水泥桩最快仅3分钟



废钢回收, 钢结构拆除, 汽车拆解.....

无锡市北奕挖掘机配件制造厂
Wuxi BeiYi Excavator Parts Factory