



振动夯实器

HYDRAULIC COMPACTOR

使用说明书
Operation Instruction



无锡市北奕挖掘机配件制造厂
WUXI BEIYI EXCAVATOR PARTS FACTORY

地址/Address:无锡市洛社镇双庙工业园A区
Shuangmiao Industry Park A, Luoshe Town, Huishan District, Wuxi
电话/Tel:0510-85167600
传真/Fax:0510-85167422
网址/Website:wxbeiye.com
邮箱/Email:wxby997@163.com

重要说明Important explanation

在第一次安装，运行或维修保养夯实器之前，请仔细阅读本手册。

请仔细解读并按照本手册运行，才能更好地保护用户者的安全。为避免不必要的伤害或损失，请始终遵守相关法则，法规和安全工作实践。

Please read the book carefully before the first installation, operation or maintenance of the compactor.

Please carefully read and run according to this manual, in order to better protect the safety of users.

In order to avoid unnecessary injury or loss, please always comply with relevant laws, regulations and safety work practices.

目录 Catalog

第一章 Chapter one:

前言 Preface

第二章 Second chapters:

使用 Use

第三章 Third chapters:

规格 Specifications

第四章 The fourth chapter:

总说明 general description

第五章 Fifth chapters:

安装 Install

第六章 Sixth chapters:

操作 Operation

第七章 Seventh chapters:

维修 Repair

第一章Chapter one

前言Preface

本手册包含安全，操作，润滑和维护的信息。
该手册既是新操作者的参考文件，也是有过操作经验人员的进修文件。
出现任何关于夯实器的问题，请垂询代理商。

This manual contains information about safety, operation lubrication and maintenance.
This manual is not only a reference document for new operators, but also a refresher document for experienced personnel.
Any questions about the compactor, please contact the agent.

警告 Notice

请不要随意使用夯实器于其它不相关的工作项目

*如果不正确操作夯实器，则会导致严重的事故，甚至会造成人员的伤亡+操作者和维修人员请仔细阅读本手册，然后进行夯实器的相关操作或修理。

*如果本手册丢失或损坏，请及时重新订购。

*如果夯实器转让，请随附转让本手册

为了安全起见，“安全预防措施相关条目在本手册中给予了相关的说明。

Please do not tamper with other irrelevant work items

*If it is not properly operated, it will cause serious accidents and even cause casualties
Operators and maintenance personnel should read the manual carefully, and then perform relevant operations or repairs on the compactor.

*If the manual is missing or damaged, please re order it in time.

* If the tamper is transferred, please attach the manual For the sake of safety, relevant articles on safety precautions are described in this manual.

第二章Second chapters 使用Use

1) 打夯坡面路面建设的使用

1) the use of tamping slope pavement construction

2) 打夯基础建筑物的使用

2) the use of ramming foundation buildings

3)打夯土壤，砾石等的使用

3) the use of tamping soil, gravel etc.

4)打夯坡面岸堤的使用

4) the use of the embankment slope tamping

5)打夯管道建设中底面土壤的使用

5) the use of ramming the pipeline construction in the bottom soil

6)打夯排水管道和岩石基面的使用

6) the use of ramming drainage pipeline and rock base

7)试桩工作的使用

7) the use of test pile work

8)其他

8) others

第三章Third chapters 说明Explain

性能参数/Performance Parameter

项目Name	型号Model	Unit	BYKC60	BYKC150	BYKC200	BYKC300
适合挖机 Applicable Excavator		Ton	4-9	11-16	17-23	23-30
打击力 Power of impulse		Ton	4	6.5	15	15
最大振动次数 vibration frequency		Rpm	2000	2000	2000	2000
使用油量 Oil Flow		L/min	45-75	85-105	120-170	120-170
压力 Pressure		Kg/cm2	100-130	100-130	150-200	150-200
重量 Weight		Kg	300	500	900	950
打击面积 Bottom Measurement	L×W×T,mm		900×550×16	1160×700×28	1350×900×30	1350×90×30
总高 Height		Mm	760	920	1060	1100
总宽 Width		Mm	550	700	900	900

发动机Engine

说明Explain	型号Model	BYKC 60	BYKC 150	BYKC 200	BYKC 300
排量Displacement(cc/rev)		32	63	80	80
端口尺寸 Port size	输入端 Output terminal	1"	1 1/4"	2"	2"
	输出端 Input end	1"	7"	2"	2"
排扣压力Outlet pressure (bar)		7	3/4"	7	7
管路规格 Pipeline specification		1/2"	1 1/4"	1	1

间歇操作规范：允许出现的最大值是每分钟10%

1/4NPT (标准压力与温度)

排水管必须与低压回路箱链接，除非发动机向一个方向转动并且回压小于100PSI(PSI=每平方英寸磅)

Intermittent operation basin: the maximum allowable value is 10% per minute

1/4NPT (standard pressure and temperature),

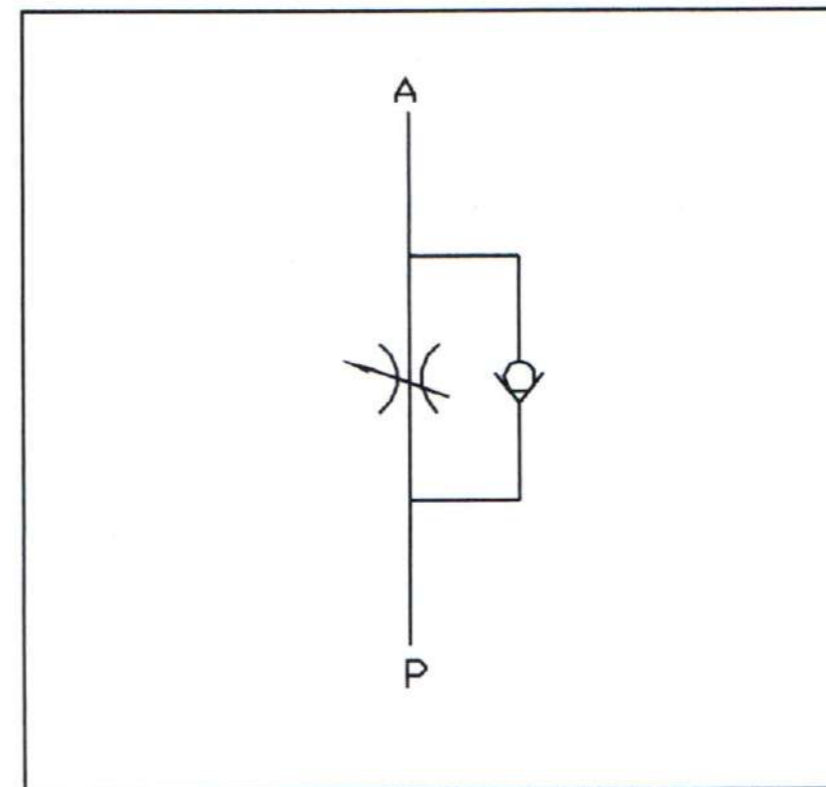
The drain pipe must be connected to the low pressure return tank

流量调节阀Flow control valve

说明Explain 型号Model	流量调节 Flow regulation v/v	额定电流 Rated flow (lpm)	最大压力 Maximum pressure (bar)	端口尺寸 Port size (P.T.A.B)
BYKC 60	HF800S	57	160	1/2"
BYKC 150	HF1200S	95	210	3/4"
BYKC 200	HF1600S	150	210	3/4"
BYKC 300	HF2000S	170	210	3/4"

流量调节阀包括反蚀减压阀

The flow control valve includes a reverse pressure relief valve.



第四章Fourth chapters

总体说明General description

1. 夯实器的使用

夯实器的特殊设计能适用于各种石场和建筑工地。

2. 产品编号

夯实器壳体上的产品编号对产品的维修以及配件的更换尤为重要。请记住产品编号。

3. 工作服装

机器操作时，若您的穿着不适宜，则会造成人员受伤。宽松的服装易被卷入正在运行机器中。建议您穿着适宜的工作服。例如：安全帽，安全鞋，防护眼镜，专业外衣，1

保护，专业手套等。工作时请不要佩戴领带或围巾，或长发工作。

夯实器外壳上的产品编号是您进行维修或订购配件的重要凭证。我们对每一个出厂产品都进行严格的质量监管，产品编号必须提交给我们的公司，以便维修。因此，请您记住特定压实机板上的序列号。

4. 起重设备

错误的操作起重设备易使人员受伤。请熟练掌握起重设备的操作并确保设备的起重量在适宜的范围内。进行起重前，请先保设备状况良好，并按照相关的操作说明进行正确天误的操作。

5. 安全

本手册是您进行安全操作和维护机器的指南。在安装，操作或维修机器前，您仔细阅读本手册，并将手册与机器放置在一起。

6. 试用操作

若您未进行机器的试用并不娴熟的操作机器则易造成人员的伤亡。请在宽敞清洁的场所进行试用操作，并保持其他不相关人员远离操作现场。请您在使用新机器前，先确保日后能进行正确无误的操作。

7. 安全障碍

在公共场所或当您的能见度降低时请让闲杂人员远高障碍区。

8. 机器使用状态

请适度操作机器，若超出限度，则会损坏机器并且会有危险事故。请不要随意将夯实器进行改造。错误的改造很容易造成危险事故。不要操作丢失需部件的机费。请按照操作说明进行操作。不要在高温下进行操作。

9. 维修

请不要擅自维修机器。当需要换部件时请联系代理商。该产品适用于大型重型挖机和建设工作，众所周知，施工现场具有危险性，因此请警惕由于不正当使用而引起的危险严重伤青甚至死亡事故。若您对产品有任何的疑问请联系咨询中心。

1. the use of tamping device

The special design of reactor can be applied in various mines and construction sites.

2. product number

The product number on the shell of the rammer is very important for the maintenance of the product and the replacement of the parts. Please remember the product number.

3. work clothes

When the machine is operating, if you wear inappropriate, it will cause injury to people.

Loose clothing is easy to get involved in the running machine. It is recommended that you wear proper work clothes. For example: safety helmet, safety shoes, protective glasses, professional coat, 1

Protection, professional gloves, etc.. Please don't wear tie or scarf or long hair when you work.

The product number on the shell of the tamper is an important voucher for your maintenance or order parts. We have strict quality control for each ex factory product, and the product number must be submitted to our company for maintenance. Therefore, remember the serial number on the specific compactor board.

4. lifting equipment

Incorrect operation of lifting equipment is liable to cause injury to personnel. Please master the operation of lifting equipment and ensure the weight of equipment in the proper range. Before lifting, please keep the equipment in good condition and correct the operation according to the relevant instructions

Incorrect operation.

5. security

This manual is a guide to your safe operation and maintenance of the machine. Before you install, operate or repair the machine, you read the manual carefully and put the manual together with the machine.

6. trial operation

If you do not carry out the machine trial, not skilled operation of the machine, it is easy to cause casualties. Please be in a spacious and clean field

The trial operation is carried out and other irrelevant personnel are kept away from the operation site. Please use the new machine before the first day that can be carried out after the correct operation.

7. safety barriers

In public places or let Xianzaren yuan far higher barriers when your visibility is reduced.

8. machine usage status

Please operate the machine properly. If it exceeds the limit, it will damage the machine and there will be dangerous accidents. Please do not tamper with the tamper

Political creation. The wrong transformation is likely to cause dangerous accidents.

Don't operate the machine costs that need to be lost. Please operate according to the instructions. Don't operate at high temperatures.

9. maintenance

Please do not repair the machine without permission. Please contact the agent when you need to change the parts. The product is suitable for large heavy excavators and construction work, as everyone knows, the construction site is dangerous, dangerous so please Xin due to improper use even serious injury or death accident qing. If you have any questions about the product

Please contact the consulting center.

第五章 Fifth chapters

安装 Install

1) 连接 Connection

接下来的程序是将进出口端连接至流量控制阀上。

The next program is to connect the inlet and outlet ports to the flow control valve.

产品型号 Product model	进出口端口尺寸 Import and export port size	
	进口端 Inlet end	出口端 Outlet end
BYKC 60	1/2"(PF)	1/2"(PF)
BYKC 150	3/4"(PF)	3/4"(PF)
BYKC 200	1"(PF)	1"(PF)
BYKC 300	1"(PF)	1"(PF)

2) 设置和调节 Setting and regulation

夯实器上的流量控制阀需要设置和调节

The flow control valve on the compactor needs to be set and adjusted

(1) 将马达上的管路拆卸掉，并用流量计来取代

Remove the pipe on the motor and replace it with a flowmeter

(2) 在大臂上轻轻施加适度的压力

Apply moderate pressure on the big arm

(3) 将油通过流量计，并调节流量控制阀，以下为建议性油流度：

The oil flow through the flowmeter, and adjust the flow control valve, the following is the recommended oil mobility:

Model	Set value
BYKC 60	60~80 lpm at 90~130(kg/cm ²)
BYKC 150	80~110 lpm at 100~140(kg/cm ²)
BYKC 200	110~140 lpm at 120~160(kg/cm ²)
BYKC 300	130~160 lpm at 130~170(kg/cm ²)

所有发动机是专为DLK03-10设计。但是同时，请对回油压力进行周期性检查。我们建议使用2-78AR。

对于DLK03-10，10BAR是最大使用压力。请尽可能的保持低五力状态，则会延长密封圈寿命，制造商建议最好不要超过7BAR。

All engines are designed for DLK03-10. But at the same time, please check the oil return pressure periodically. We recommend the use of 2-78AR.

For DLK03-10, 10BAR is the maximum use pressure. Please keep as low as possible five forces, but will extend the life of the seal group, manufacturers recommend Best not to exceed 7BAR.

重要通知 Important notice

请确保上述检查完好，可启动挖掘机，慢慢伸展小臂，以便确保管路无挤压处。请先启用小的打夯力并开启油流量

Please ensure that the above inspection is complete, you can start the excavator, slowly extend the arm, in order to ensure that the road without extrusion. Please enable the small ramming force and open oil flow

第六章Sixth chapters

使用操作Usage operation

- 1) 请确保所有管路都正常安装，所有回油线路都完全铺张开。
- 2) 请确保油流速和使用压力正确调适。
- 3) 开启夯实器。请将夯实器放置于被打夯的物体上，并在前10-20秒内，请确保使用小的压力。可根据不同的打夯物体，选择不同的使用压力。
- 4) 打夯时候最好是交替使用大小力，先使用轻微的打夯力，紧接着使用稍大的打夯力，反复交替进行，请不要过分打夯，超过承受力。打夯颗粒物质时，夯实器可抬高至0.5-1米高度。对于粘性物质，可低于这个高度。打夯土壤时，含水率是一个重要因素。获得广泛验证和接受的装填系统是一种倾斜技术，原料被填充在一个区域，并且允许寻求其反应的角。打夯也从这个角度开始，但要在管子上面。所有的原料填充到这个角里，打夯板沿着这个反应角上下运动。用这个方法，填充料和压缩机能与操作员离的很近，当管子安置好后，可以很快的在铺一层。完成日常工作后，不要将过载的物体放在震动框里过夜。储藏时将压实板扭到机器的边上或者是底部储时，将压实板扭到机器的边上或者是底部。

- 1) make sure that all the pipelines are installed properly and all the oil return lines are completely paved.
- 2) ensure proper adjustment of oil flow rate and operating pressure.
- 3) open the compactor. Please placed in the reactor by ramming objects, and in the first 10-20 seconds, please ensure that the use of small pressure. According to the different objects without ramming, use pressure.
- 4) ramming is best when the alternate use of force size, first use the slight ramming force, followed by the use of larger ramming force, alternately repeatedly, don't ramming, more than endurance. Ramming particulate matter, reactor can be up to 0.5-1 meters in height. For viscous substances, below this height. Tamping soil, water content is an important factor. A widely accepted and accepted loading system is a tilting technique in which the raw material is filled in an area and allowed to seek the angle of its reaction. Ramming also started from this point of view, but in the top. All the raw material filler into the corner, hit the plate along the angle of motion. In this way, the filler and compressor can be very close to the operator, and when the pipe is placed, it can be paved quickly. Don't put the overloaded objects overnight in the shaking box after completing the daily work. During storage, the compaction plate is twisted to the edge of the machine or stored at the bottom, and the compaction plate is twisted to the edge of the machine or at the bottom.

振动夯质量保修证书 Quality guarantee certificate for vibratory compactor

配件名称	质量保证期限	质保范围
液压马达	6个月	壳体开裂，输出轴断裂，6个月之内免费更换，3个月以上出现的漏油不在理赔范围之内须自行购买油封。
壳体总成	6个月	因不遵守操作规范引起的破损，未经本公司同意加固后导致的开裂不在理赔范围；6个月钢板开裂，更换开裂部件；焊道开裂客户需自行焊接，无能力焊接公司免费焊接，不承担其他费用。
偏心铁总成	3个月	不及保养更换齿轮油引起的破损及磨损、因空打过多断裂。
轴承	3个月	不按规定添加润滑油，导致磨损加快，均不在索赔范围。
溢流阀	3个月	液压油内有异物造成的破损，定期保养不良，外部冲击，过度调高溢流压力引起的破损，均不在索赔范围。
止回阀	3个月	液压油内有异物，超过油封更换时间，定期保养不良，使用者的错误，外部冲击，一个月后发生的卡发，不在索赔范围内。
组装管路	3个月	保养不当，经外力碰撞，过度调整溢流阀的压力引起的破损。
减震块	不保修	减震块跟机器操作有很大关系，因此不存在保修保养。
各种螺丝 螺帽、对丝、接头不保修，操作者没有按时拧紧螺帽而导致丢失，崩坏，断裂松动、碰撞等		

Accessories name	Quality guarantee period	warranty scope
Hydraulic motor	6 months	1. Shell cracking, Output shaft rupture: Free replacement within 6 months, 2. Oil spills more than three months are not covered, need buy oil seal yourself
Shell assembly	6 months	The damage caused by failure to comply with the operation specification, the cracking caused by reinforcement without our company's consent is not within the claim settlement scope; Cracked steel plate, change the Cracked parts; The weld cracked, Customer needs to weld by themselves.
Eccentric iron assembly	3 months	The damage caused by failure to timely maintenance and replacement of gear oil, The fracture caused by much empty work, Not under warranty scope.
Bearing	3 months	The external impact and excessive use cause breakage and wear, too
Overflow valve	3 months	The hydraulic oil has foreign body breakage, regular maintenance, external shock, excessive excessive flow pressure
back-pressure valve	3 months	There are foreign bodies in hydraulic oil, exceeding the replacement time of oil seal, improper maintenance, user's mistake, external shock, issuing card after one month, all of which are not in the scope of claim
Assembly line	3 months	The rupture of the vibration plate is not properly maintained, and the damage caused by the pressure of the relief valve is adjusted by the external force by the external force collision
Damping block	No warranty	The offset block has a lot to do with the machine operation, so there is no warranty maintenance
All kinds of screw nuts, thread, joints are not guaranteed, the operator failed to tighten the nut on time, resulting in loss, breakage, loose fracture, collision and so on.		

第七章Seventh chapters

维护Maintain

1)工作400小时后请对油压和轴承进行检查

Check the oil pressure and bearing after 400 hours of work

2) 螺丝的扭矩

Torque of screw

规格 Specifications	扭矩 Torque
10mm	44Nm
12mm	77Nm
16mm	190Nm
20mm	350Nm

所有紧固件高强度等级为12.9T

* all fasteners have a high strength level of 12.9T*

3)所有螺母 All nuts

所有六角螺母的高强度等级是12.9T (JIS) 并且是为特殊用途的锁螺母。

每使用4小时后，请再次确保各个零部件不要松弛，定期检查是保证发挥最好性能的重要措施。

The high strength grade of all six corner nuts is 12.9T (JIS) and is the lock nut for special purposes.

After 4 hours of use, please ensure that each component is not relaxed. Regular inspection is an important measure to ensure the best performance.

重要通知 Important notice

更换轴承时，请使用原厂"的零配件，因为这些都是经过特别挑选的备件。

Replacement of bearings, please use the original spare parts, because these are specially selected spare parts.

4)润滑油 lubricating oil

轴承的油定要保持保持在适度的量以下为夯实器用油量:

The oil of the bearing must be kept below the proper quantity, which is the oil content of the compactor

规格型号 Specification model	油量 Maintain
BYKC 60	1.5 L
BYKC 150	2.4 L
BYKC 200	4.9 L
BYKC 300	4.9 L